

# Japanese Beetle

## Japanese Beetle (JB)

Adult JB start to emerge in early summer, (Image 1). They feed very heavily on many plants in the garden and landscape. They feed on the foliage, fruit and flowers of over 300 plants. On foliage they eat the tissue between the veins, (Image 2) this is called skeletonizing. On fruits and flowers they eat everything.

JB's are day beetles, which means they emerge from the soil every day, they feed, then return to the soil for the night. In order to attract a mate they emit a pheromone, this attracts more adults, these in turn emit a pheromone, increasing the number.

The female will drop from a plant and deposit up to 5 eggs, she will do this every day for up to 2 weeks, depositing 40 to 60 eggs in her 6 week life. Eggs hatch in as little as 10 days.

Once the eggs hatch the larvae "white grub", (Image 3) begin feeding on the roots of plants and turf (Image 4). They feed until cold weather drives them deeper into the soil where they will "hibernate", after winter they move up to shallow soil, feed and pupate.

### Control

When trying to control JB a multi-step control may be needed. Apply a spray or liquid to the leaves where they are feeding, apply a granule or dust to the ground beneath plants they are feeding on. Then treat adjacent turf areas for the future grubs.

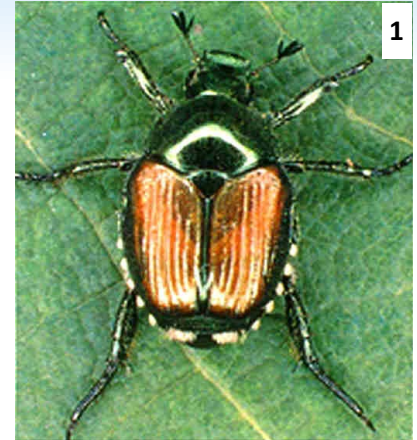
When the adults are feeding on non-edible plants, systemics are a choice. *FL Tree & Shrub Drench* can be applied at the base of the plant and watered in, it will do all the work, moving up and into the leaves for one year of protection. The *HY Systemic Insect Spray* is intended to be sprayed on the leaves, but only last six weeks.

In the yard, *HY Grub Free Zone II* or *III* is the most effective control. An application in late May, June or early July will give the best results. Apply *HY Bug Blaster Above/Below*, for a product that works on the adults above the ground and grubs below the ground.

*HY 38 Plus* is not systemic but offers both a contact and long residual control, up to 3 weeks.

In and around edibles, *HY Garden, Pet & Livestock Dust* is a very good option, you may need to re-apply every rain or watering, see the label for the number of applications allowed.

*FLG Spinosad Soap* is a **FAST** contact killer. Apply over the adults and it will knock them off the plant in minutes where they will die later. Watch them fall off the plant!



ferti-lome

Hi-Yield

ferti-lome Info Sheet

ferti-lome

